



CUBING REFERENCE GUIDE

STANDARD FREIGHT

10' or less of trailer space
Over 10' of trailer space

L x W x H
1000 LBS/FT

***Exception - Non-palletized freight with a width of 48" & less CUBE AS 500LBS/FT**

NON STANDARD FREIGHT

LENGTH	WEIGHT	WIDTH	HEIG	RESULT
RULE 1 - OVER 96"	LESS THAN 120LBS	LESS THAN 12"	LESS THAN 43"	ACTUAL DIMS - L X W X H
RULE 2 - OVER 96"	LESS THAN 120LBS	LESS THAN 12"	43" AND OVER	ACTUAL LENGTH X ACTUAL WIDTH X 48H
RULE 3 - OVER 96"	LESS THAN 120LBS	12" TO 48"	LESS THAN 43"	ACTUAL LENGTH X 48W X 48H
RULE 4 - OVER 96"	LESS THAN 120LBS	12" TO 48"	43" AND OVER	ACTUAL LENGTH X 48W X 96H
RULE 5 - OVER 96"	LESS THAN 120LBS	GREATER THAN 48"	LESS THAN 43"	ACTUAL LENGTH X ACTUAL WIDTH X 48H
RULE 6 - OVER 96"	LESS THAN 120LBS	GREATER THAN 48"	43" AND OVER	ACTUAL LENGTH X ACTUAL WIDTH X 96H
RULE 7 - OVER 96"	MORE THAN 120LBS	LESS THAN 12"	LESS THAN 12"	ACTUAL DIMS - L X W X H
RULE 8 - OVER 96"	MORE THAN 120LBS	LESS THAN 12"	12" BUT LESS THAN	ACTUAL LENGTH X ACTUAL WIDTH X 48H
RULE 9 - OVER 96"	MORE THAN 120LBS	LESS THAN 12"	43" AND OVER	ACTUAL LENGTH X 48W X 96H
RULE 10 - OVER 96"	MORE THAN 120LBS	12" TO 48"	LESS THAN 43"	ACTUAL LENGTH X 48W X 48H
RULE 11 - OVER 96"	MORE THAN 120LBS	12" TO 49"	43" AND OVER	ACTUAL LENGTH X 48W X 96H
RULE 12 - OVER 96"	MORE THAN 120LBS	GREATER THAN or EQUAL TO 49"	LESS THAN 43"	ACTUAL LENGTH X 96W X 96H
RULE 13 - OVER 96"	MORE THAN 120LBS	GREATER THAN 49"	43" AND OVER	ACTUAL LENGTH X 96W X 96H (LINEAR FOOT RULE APPLIES)

Non Standard Freight applies to freight over 8' such as pipe, flag poles, carpet etc...that cannot be handled and loaded in the same manner as standard freight.

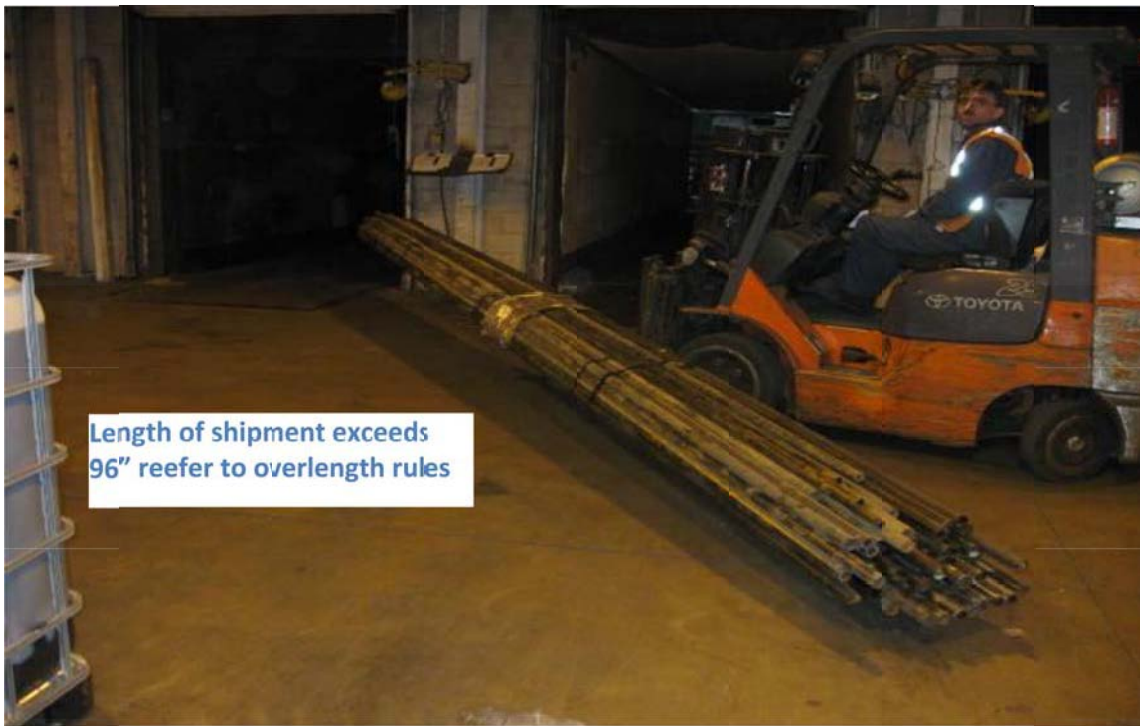


CHIMNEY BLOCK RULES

Skids/FT Trl	Skids/FT Trl
6 skids / 11.8'	17 skids / 31.2'
7 skids / 12.8'	18 skids / 33.0'
8 skids / 14.7'	19 skids / 34.8'
9 skids / 16.5'	20 skids / 36.7'
10 skids / 18.3'	21 skids / 38.5'
11 skids / 20.2'	22 skids / 40.3'
12 skids / 22.0'	23 skids / 42.2'
13 skids / 23.8'	24 skids / 44.0'
14 skids / 25.7'	25 skids / 45.8'
15 skids / 27.5'	26 skids / 47.7'
16 skids / 29.3'	



Apply actual dimensions to highest point of freight
L x W x H (HEIGHT OF TALLEST CYLINDER)



Actual shipment dimensions: 104L x 12W x 12H refer to over length rules in Reference Guide to determine exact cube



2 skids = 104L x 46W x 50H refer to over length rules in Reference Guide to determine exact cube



Apply actual dimensions to highest point of freight
L x W x H (HIGHEST POINT)



Cube as actual dimensions **L X W X H**



Apply actual dimensions to highest point of freight
L x W x H (HIGHEST POINT)



Actual dimensions are 12' feet long. Once small roles are top loaded to the left, palletized freight can be loaded on right hand side. **Cube as 144L x 48W x 96H**



Actual shipment dimensions 104L x 42W x 43H, over length rules to apply cube as: **104L x 48W x 48H (see rules)**



Actual dimension 100L x 68W x 52H, cube as: **100L x 96W x 96H**

**This example has been included to show a situation where the customer needs to be consulted with to advise this is not the best way to ship their freight. Shipping the pieces separately would be more cost effective to the customer and transport in a more efficient manner. The Customer Service Representative may need to be involved.

